

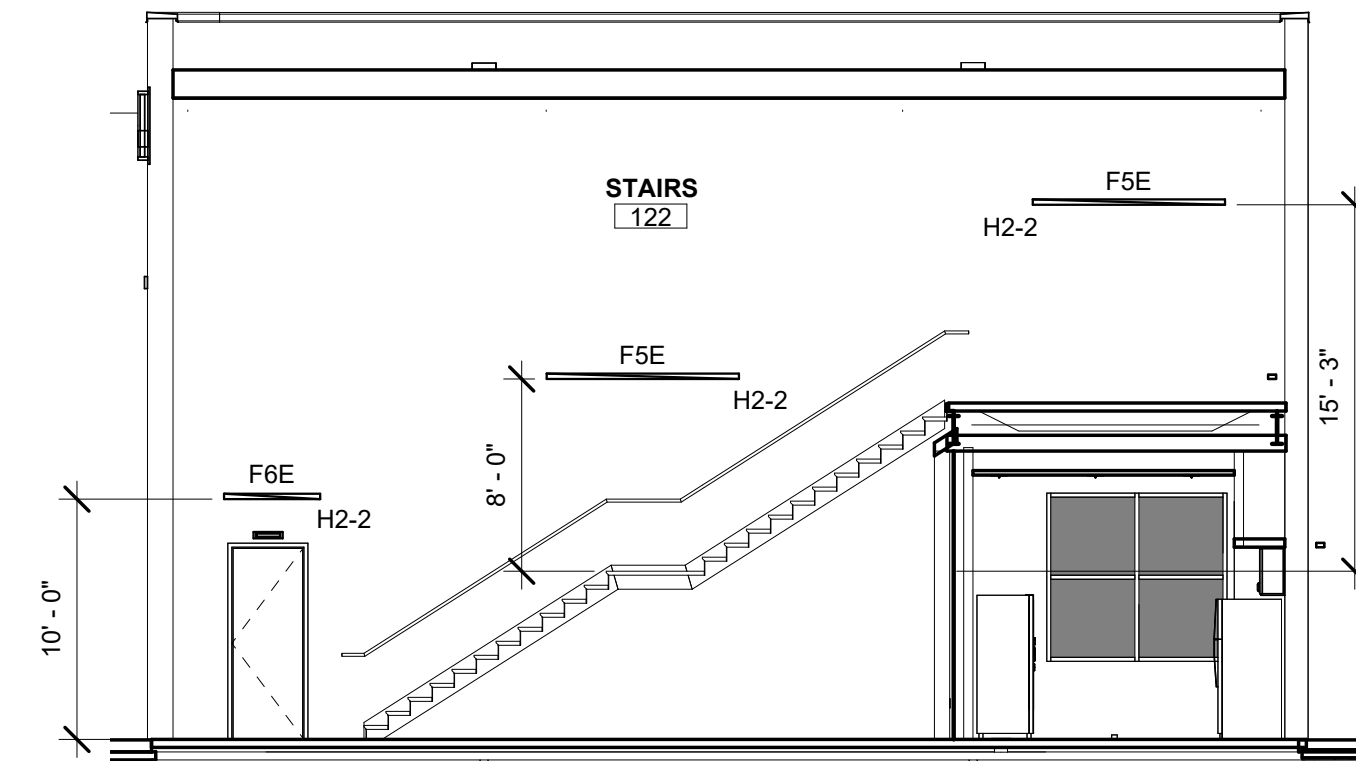
1 ENLARGED LIGHTING PLAN - ACCOUNTING  
3/16" = 1'-0"

#### LIGHTING KEYNOTES:

- 1 COORDINATE LIGHT FIXTURE LOCATIONS WITH MECHANICAL CONTRACTOR TO AVOID CONFLICTS WITH DUCTWORK AND EQUIPMENT PRIOR TO ROUGH-IN.
- 2 SUSPEND FIXTURE 72" BELOW CEILING. VERIFY ALL EXACT FIXTURE HEIGHTS WITH ARCHITECT PRIOR TO ROUGH-IN. TYPICAL THIS FIXTURE TYPE.
- 3 CENTRALLY CONTROLLED SPACE. PROVIDE NLIGHT POWER PACK AND ALL NECESSARY COMPONENTS / LOW VOLTAGE CABLING TO INTERFACE WITH NLIGHT ECLYPSE HEAD END. SUBSCRIPT INDICATES CONTROL ZONE.
- 4 SEE SHEET E-103 1ST FLOOR ENLARGED LIGHTING PLAN FOR LIGHTING THIS SPACE.
- 5 NLIGHT ARP INTENC16 NLT RELAY PANEL.
- 6 PROVIDE AND INSTALL NLIGHT ECLYPSE CONTROL MODULE (MODEL #NECY MVOLT ENC) IN RECESSED IN-WALL BOX. MAKE FINAL CAT 5A CONNECTION TO ASSOCIATED NLIGHT POWER PACKS FOR COMPLETE SYSTEM CONTROL. COORDINATE EXACT LOCATION WITH ARCHITECT / OWNER PRIOR TO ROUGH-IN. ZONE AS LISTED BELOW.
  - a. SHOP ROW 1
  - b. SHOP ROW 2
  - c. SHOP ROW 3
  - d. SHOP ROW 4
  - e. SHOP ROW 5
  - f. MEZZANINE / PARTS
  - g. OFFICE AREA
  - h. EXTERIOR FACADE / WALLPACKS
  - i. EXTERIOR ACCENT / SIGNAGE
- 7 SUSPEND FIXTURE SO THAT BOTTOM OF FIXTURE IS 9' AFF. VERIFY ALL EXACT FIXTURE HEIGHTS WITH ARCHITECT PRIOR TO ROUGH-IN.
- 8 SUSPEND FIXTURE SO THAT BOTTOM OF FIXTURE IS 10'-6" AFF. VERIFY ALL EXACT FIXTURE HEIGHTS WITH ARCHITECT PRIOR TO ROUGH-IN.
- 9 MOUNT EXTERIOR FIXTURE AT APPROX. 11' AFF. COORDINATE HEIGHT WITH EXTERIOR CANOPIES. VERIFY ALL EXACT FIXTURE HEIGHTS WITH ARCHITECT PRIOR TO ROUGH-IN.
- 10 STAIRWELL LIGHTING TO BE UNSWITCHED.
- 11 SUSPEND FIXTURE SO THAT BOTTOM OF FIXTURE IS 10' AFF. VERIFY ALL EXACT FIXTURE HEIGHTS WITH ARCHITECT PRIOR TO ROUGH-IN.

#### LIGHTING GENERAL NOTES:

- COLOR TEMP OF ALL LIGHTING FIXTURES TO BE 4000K CCT UNLESS NOTED OTHERWISE.
- FIXTURE FINISH DETERMINED BY ARCHITECT DURING SHOP DRAWINGS. INCLUDE COST FOR CUSTOM COLOR WHERE STANDARD OPTIONS ARE LIMITED.
- ALL LIGHTING CONTROLS SHALL MEET OR EXCEED REQUIREMENTS AS SET FORTH IN IECC 2021 SECTION C405.
- SUBSCRIPTS AT LIGHT FIXTURE DESIGNATIONS DENOTE SWITCHING SCHEME.
- ALL EXIT SIGNS AND EMERG FLOODS TO BE UNSWITCHED.
- EXTERIOR LIGHTING TO BE CONTROLLED VIA PHOTOCCELL / TIMECLOCK COMBINATION VIA NLIGHT ARP INTENC16 NLT RELAY PANEL.
- PROVIDE ADDITIONAL UNSWITCHED CONDUCTOR TO BATTERY OF FIXTURE. TYPICAL OF TYPES ENDING WITH "E". PROVIDE ALL COMPONENTS NECESSARY TO OPERATE WITH CONTROLS AS NOTED UNDER NORMAL POWER.

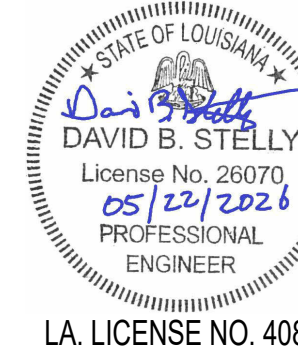


3 STAIR 122 LIGHTING SECTION  
1/8" = 1'-0"



ASSOCIATED DESIGN GROUP, INC.  
3909 West Congress Street, Suite 201  
Lafayette, Louisiana 70506  
Phone: (337) 234-5710  
Email: adginc@adginc.org

Project No. 25326



NEW CONSTRUCTION  
FORD PRO  
FOR  
MIKE WILLIS  
2010 PATTON ST.

© COPYRIGHT 2019,  
RANDY M. GOODLOE, A.I.A. APAC  
ALL INFORMATION, EITHER DRAWN, WRITTEN,  
OR IMPLIED APPEARING IN THIS DOCUMENT  
SHALL NOT BE DUPLICATED, DISCLOSED, OR  
OTHERWISE USED WITHOUT THE WRITTEN  
PERMISSION OF THE AUTHOR, RANDY M.  
GOODLOE, AIA APAC. THIS DOCUMENT IS AN  
INSTRUMENT OF SERVICE AND IS THE SOLE  
PROPERTY OF THE AUTHOR. FURTHERMORE,  
THE USE OF THIS DOCUMENT FOR ANY  
PURPOSE SHALL BE REVOKED, IF THE INTENT  
OF THE DESIGN OR THE CONSTRUCTION  
TECHNIQUES OR DETAILS SHOWN HEREIN  
ARE NOT ADHERED TO OR THE  
CONTRACTUAL AGREEMENT GOVERNING  
THEIR USE ARE NOT STRICTLY ADHERED TO.

PROJECT NO.

25012

PROJECT MANAGER

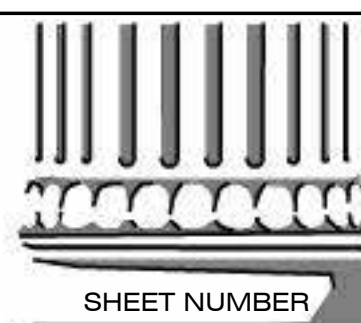
TM

DATE ISSUED

2026.05.22

REVISED

REVISED



E-104  
2ND FLOOR ENLARGED  
LIGHTING PLAN